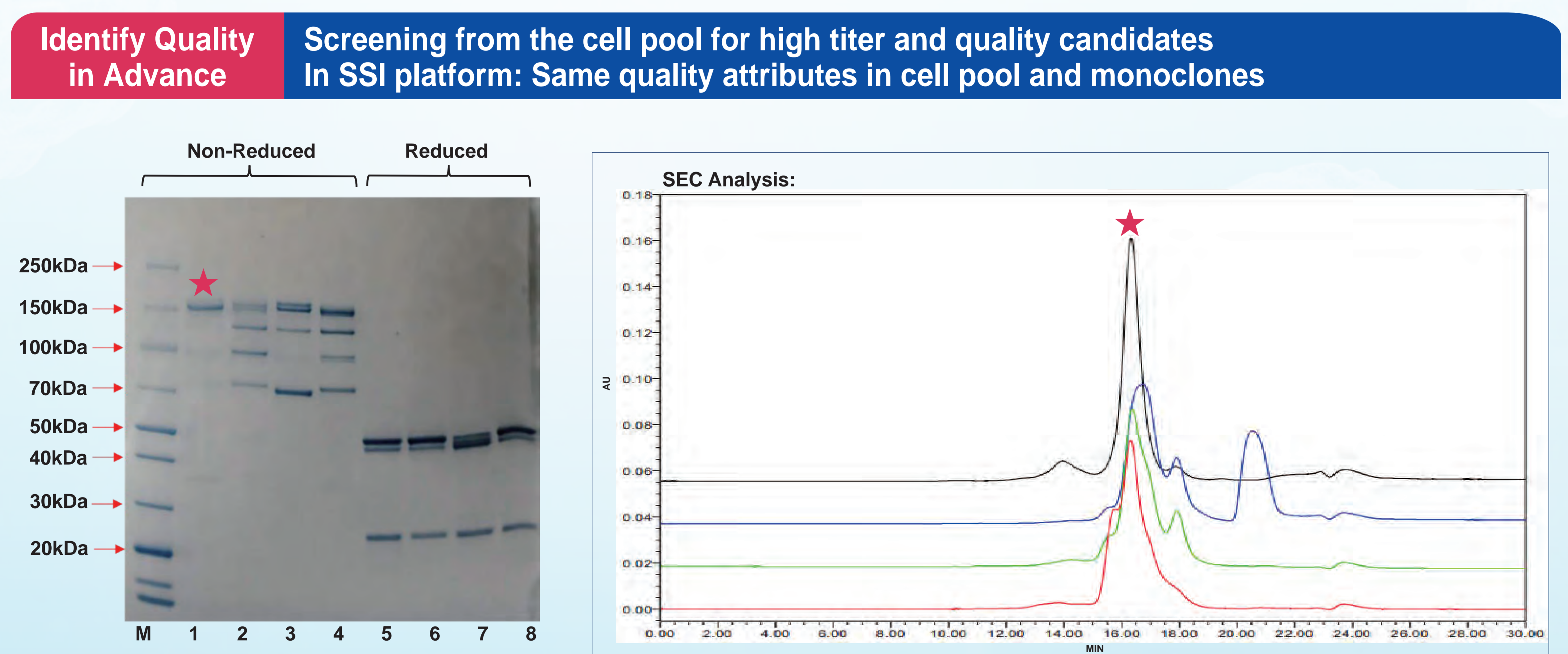
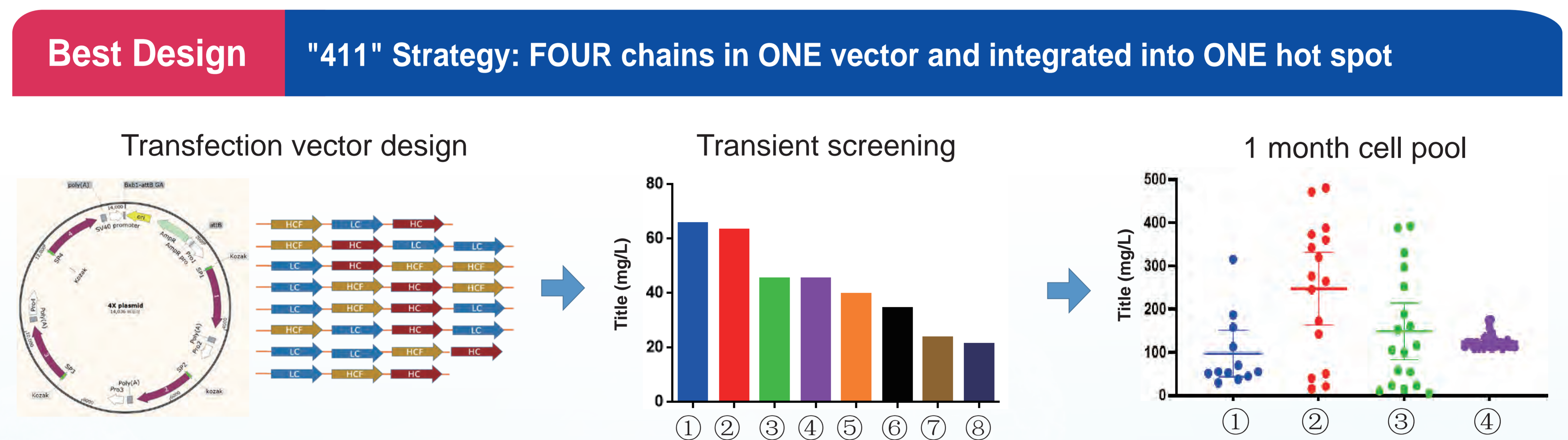
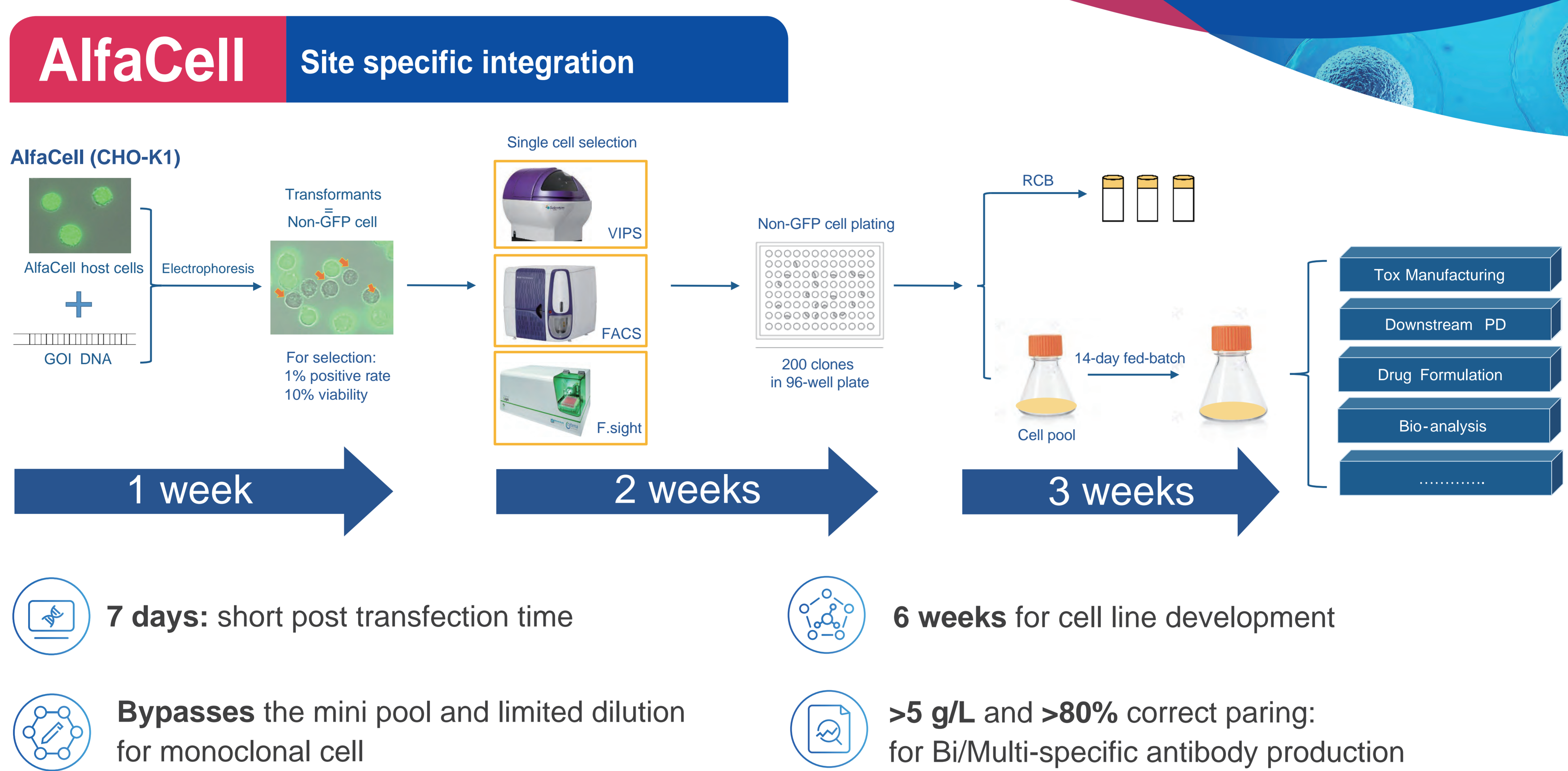


AlfaCell

State-of-the-art Bi/Multi-specific Antibody Cell Line Development Platform



LinkedIn



Case Study Achieve high titer and high quality for all kinds of bispecific

Structure	Clients	MW (KDa)	AlfaCell Titer (g/L)	Random Titer (g/L)	Correct Paring%
	2 chains	200	2.5	1.8	96%
	2 chains	200	5.5	-	68%
	2 chains	124	12.0	3.6	54.6%
	2 chains	250	0.8	0.06	98%
	3 chains	130	5.5	-	90%
	4 chains	150	6	-	87%