

Great Bay Bio (GBB), headquartered in Hong Kong, is a biotechnology company accelerating drug development through cutting-edge technologies, including AI, big data mining, and automation. GBB is committed to address the challenges of long timelines, high costs, and low success rates in drug development.



AI + Culture Media Development

The AlfaMedX platform applies artificial intelligence (AI) technology to the development of cell culture media formulations, establishing a media formulation algorithm platform to develop media suitable for cell growth, protein expression, and cell differentiation, including basal media, fed-batch media, and perfusion media.



Catalog Culture Media

• For CHO-K1 & CHO-GS Cell Lines

1. Defined chemical composition of the culture media and free from any animal-derived components.
2. Contains amino acids, vitamins, glucose, lipids, inorganic salts, and trace elements; free from growth factors, cholesterol, peptides, hydrolysates, and phenol red.
3. The dry powder culture media contains P188 and HT, without L-glutamine.

AI + Media Development



High Titer

AlfaMedX (NF3370+DF2025) protein expression is comparable to or better than commercial culture media.



Adaptable

AlfaMedX (NF3370+DF2025) has good universality and suitable for cell line culturing of various products.



LinkedIn



www.greatbay-bio.com



info@greatbay-bio.com

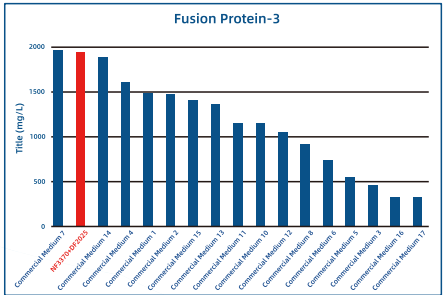
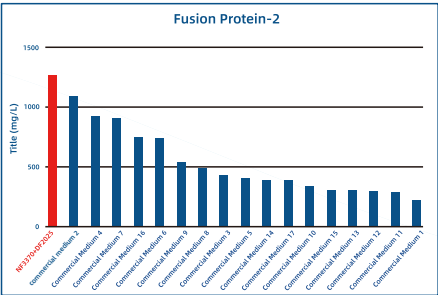
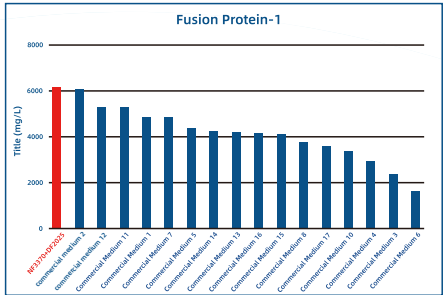


400 079 8808

CASE STUDY

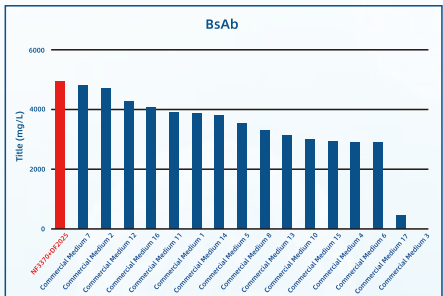
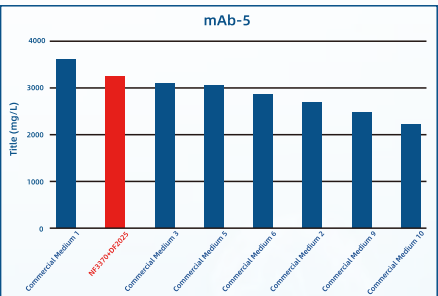
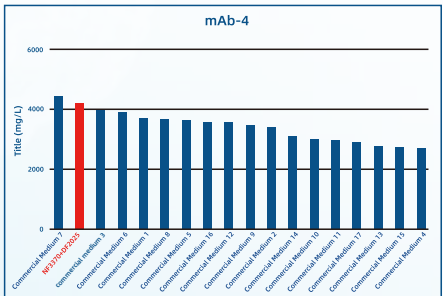
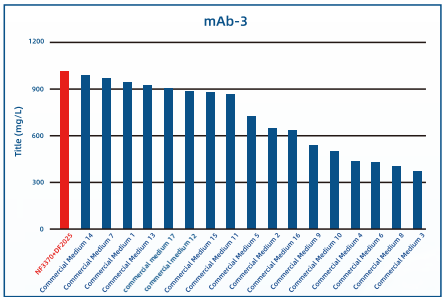
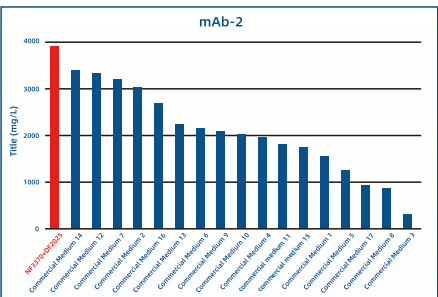
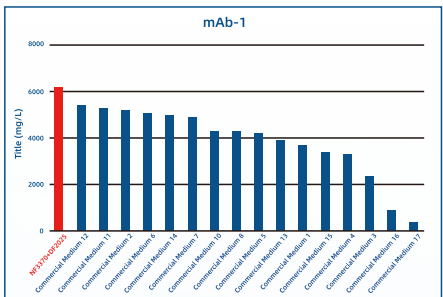
Fusion Protein

■ NF3370+DF2025 ■ Commercial culture media



mAb & BsAb

■ NF3370+DF2025 ■ Commercial culture media



Business Model



Apply for Trial Sample



Shipment from Warehouse



Trial Test for AlfaMedX